

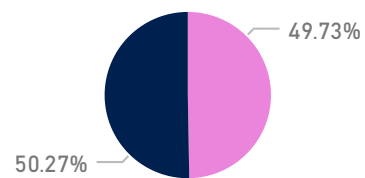
89369

Nacimientos



44441

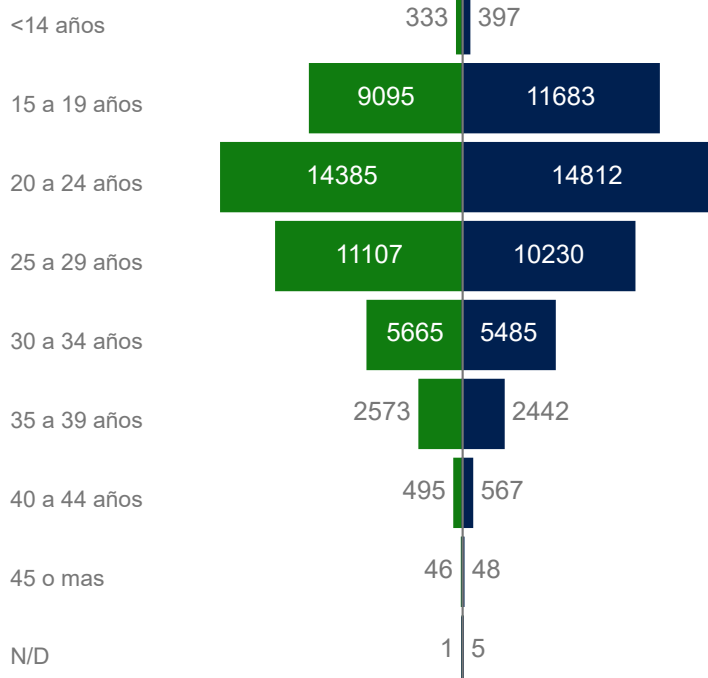
FEMENINO MASCULINO



44928

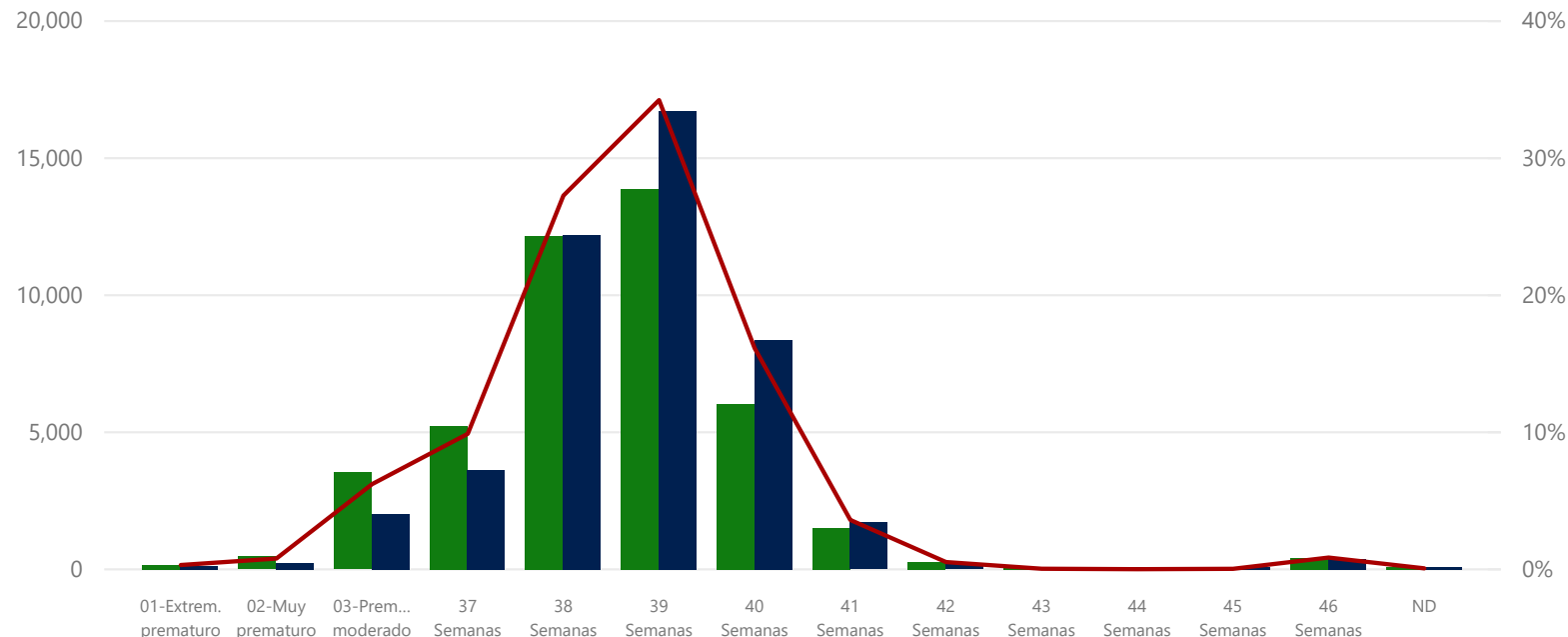
Nacimiento por grupo etario madre y tipo de parto

Cesárea Vaginal

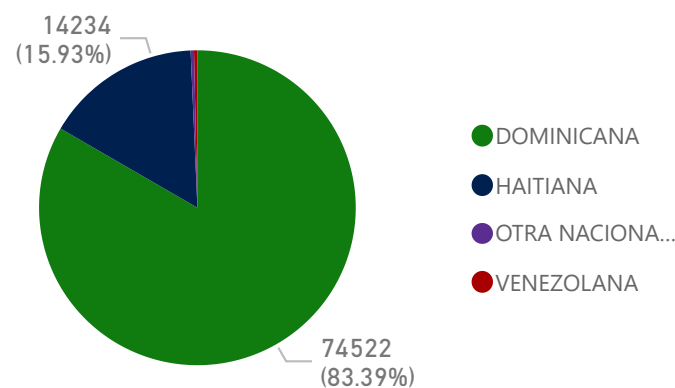


Nacimientos por edad gestacional y tipo de parto

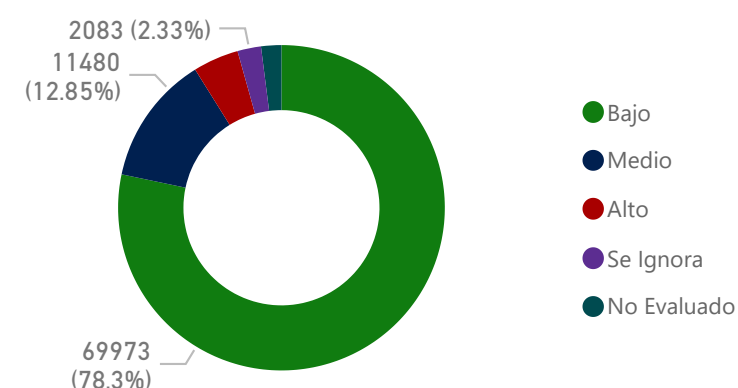
Cesárea Vaginal % Nacimientos por edad gestacional



Nacimientos por Nacionalidad de la madre



Nacimientos por Riesgo neonatal



Region atendio parto ▼

 All ▼

 Year ▼

 2018 ▼

 Month ▼

 All ▼

Region atención del parto vs Region residencia de la Madre

Region de atención del parto VS Region residencia de la madre

Region atención	R0	R1	R2	R3	R4	R5	R6	R7	R8	Total
REGION 0	38717	971	16	15	47	64	67	7	21	39925
REGION 1	14	9239	2	4	2	42				9303
REGION 2	17	1	11794	30	1	9	6	486	99	12443
REGION 3	2	1	49	2640	1				31	2724
REGION 4	4	1	1	4209	1	1			1	4218
REGION 5	40	4	2	3	13	6945	2	6	2	7017
REGION 6	13	2		32	1	5764	1			5813
REGION 7		2	103		1	37	3865			4008
REGION 8	20		6	9	2	1	1	3879		3918
Total	38827	10221	11973	2697	4306	7026	5920	4366	4033	89369

Provincia atendió parto	No.	%
SANTO DOMINGO	24866	27.82%
DISTRITO NACIONAL	12966	14.51%
SANTIAGO	8681	9.71%
SAN CRISTOBAL	7184	8.04%
BARAHONA	3592	4.02%
LA VEGA	2858	3.20%
PUERTO PLATA	2749	3.08%
AZUA	2632	2.95%
LA ROMANA	2277	2.55%
VALVERDE	2142	2.40%
MONTE PLATA	2093	2.34%
SAN JUAN	2090	2.34%
PERAVIA	2042	2.28%
SAN PEDRO DE MACORIS	1909	2.14%
LA ALTAGRACIA	1619	1.81%
DUARTE	1152	1.29%
ELIAS PINA	1091	1.22%
ESPAILLAT	1013	1.13%
SANCHEZ RAMIREZ	998	1.12%
DAJABON	759	0.85%
HERMANAS MIRABAL	658	0.74%
EL SEIBO	610	0.68%
HATO MAYOR	602	0.67%
SANTIAGO RODRIGUEZ	570	0.64%
MONTE CRISTI	537	0.60%
MARIA TRINIDAD SANCHEZ	491	0.55%
SAMANA	423	0.47%
BAORUCO	379	0.42%
INDEPENDENCIA	247	0.28%
SAN JOSE DE OCOA	77	0.09%
MONSIEUR NOUEL	69	0.07%
Total	89369	100.00%

Establecimiento	No.	%
MATERN DR. REYNALDO ALMANZAR	9099	10.18%
MATERNIDAD NUESTRA SEÑORA DE LA ALTAGRACIA	8170	9.14%
SAN LORENZO DE LOS MINA (MATERNO-INFANTIL)	7772	8.70%
HOSPITAL PRESIDENTE ESTRELLA URENA SANTIAGO	6850	7.66%
JUAN PABLO PINA	4493	5.03%
HOSPITAL DE LA MUJER DOMINICANA	3432	3.84%
HOSPITAL JAIME MOTA	3424	3.83%
DR MARCELINO VELEZ SANTANA	2886	3.23%
TAIWAN 19 DE MARZO	2524	2.82%
RICARDO LIMARDO	2400	2.69%
DR FRANCISCO ANTONIO GONZALVO	2226	2.49%
DR LUIS MORILLO KING	2205	2.47%
GENERAL DOCTOR VINICIO CALVENTI	1991	2.23%
NUESTRA SENORA DE REGLA	1980	2.22%
DR ANTONIO MUSA	1800	2.01%
NUESTRA SENORA DE LA ALTAGRACIA	1594	1.78%
DR. ALEJANDRO CABRAL	1441	1.61%
HOSPITAL DR JOSE FRANCISCO PENA GOMEZ	1377	1.54%
SAN VICENTE DE PAUL	1128	1.26%
TORIBIO BENCOSME	1013	1.13%
DR. ANGEL CONTRERAS	938	1.05%
ROSA DUARTE	869	0.97%
Total	89369	100.00%

Desagregación por provincia, grupo etareo y tipo de partos

Tipo de parto	Cesárea		Vaginal		Total	
Grupos Etarios de Madres	Nacidos Vivos	% Nacidos Vivos	Nacidos Vivos	% Nacidos Vivos	Nacidos Vivos	% Nacidos Vivos
< 14 años	333	0.37%	397	0.44%	730	0.82%
15 a 19 años	9095	10.18%	11683	13.07%	20778	23.25%
20 a 24 años	14385	16.10%	14812	16.57%	29197	32.67%
25 a 29 años	11107	12.43%	10230	11.45%	21337	23.88%
30 a 34 años	5665	6.34%	5485	6.14%	11150	12.48%
35 a 39 años	2573	2.88%	2442	2.73%	5015	5.61%
40 a 44 años	495	0.55%	567	0.63%	1062	1.19%
45 o mas	46	0.05%	48	0.05%	94	0.11%
N/D	1	0.00%	5	0.01%	6	0.01%
Total	43700	48.90%	45669	51.10%	89369	100.00%

Tipo de parto	Cesárea		Vaginal		Total	
Month	Cantidad	%	Cantidad	%	Cantidad	%
January	3489	3.90%	3927	4.39%	7416	8.30%
February	3210	3.59%	3360	3.76%	6570	7.35%
March	3309	3.70%	3276	3.67%	6585	7.37%
April	3053	3.42%	3218	3.60%	6271	7.02%
May	3222	3.61%	3121	3.49%	6343	7.10%
June	3007	3.36%	3021	3.38%	6028	6.75%
July	3622	4.05%	3529	3.95%	7151	8.00%
August	4118	4.61%	4120	4.61%	8238	9.22%
September	4339	4.86%	4640	5.19%	8979	10.05%
October	4581	5.13%	4809	5.38%	9390	10.51%
November	4107	4.60%	4548	5.09%	8655	9.68%
December	3643	4.08%	4100	4.59%	7743	8.66%
Total	43700	48.90%	45669	51.10%	89369	100.00%

Tipo de parto	Cesárea		Vaginal		Total	
Provincia atendió parto	Cantidad	%	Cantidad	%	Cantidad	%
AZUA	1010	1.13%	1622	1.81%	2632	2.95%
BAORUCO	101	0.11%	278	0.31%	379	0.42%
BARAHONA	1675	1.87%	1917	2.15%	3592	4.02%
DAJABON	185	0.21%	574	0.64%	759	0.85%
DISTRITO NACIONAL	6976	7.81%	5990	6.70%	12966	14.51%
DUARTE	729	0.82%	423	0.47%	1152	1.29%
EL SEIBO	299	0.33%	311	0.35%	610	0.68%
ELIAS PINA	184	0.21%	907	1.01%	1091	1.22%
ESPAILLAT	534	0.60%	479	0.54%	1013	1.13%
HATO MAYOR	308	0.34%	294	0.33%	602	0.67%
HERMANAS MIRABAL	418	0.47%	240	0.27%	658	0.74%
INDEPENDENCIA	46	0.05%	201	0.22%	247	0.28%
LA ALTAGRACIA	868	0.97%	751	0.84%	1619	1.81%
LA ROMANA	882	0.99%	1395	1.56%	2277	2.55%
LA VEGA	1735	1.94%	1123	1.26%	2858	3.20%
MARIA TRINIDAD SANCHEZ	301	0.34%	190	0.21%	491	0.55%
MONSEÑOR NOUEL	19	0.02%	43	0.05%	62	0.07%
MONTE CRISTI	208	0.23%	329	0.37%	537	0.60%
MONTE PLATA	1072	1.20%	1021	1.14%	2093	2.34%
PERAVIA	899	1.01%	1143	1.28%	2042	2.28%
PUERTO PLATA	1324	1.48%	1425	1.59%	2749	3.08%
SAMANA	223	0.25%	200	0.22%	423	0.47%
SAN CRISTOBAL	2558	2.86%	4626	5.18%	7184	8.04%
SAN JOSE DE OCOA	49	0.05%	28	0.03%	77	0.09%
SAN JUAN	824	0.92%	1266	1.42%	2090	2.34%
SAN PEDRO DE MACORIS	899	1.01%	1010	1.13%	1909	2.14%
SANCHEZ RAMIREZ	688	0.77%	310	0.35%	998	1.12%
SANTIAGO	3952	4.42%	4729	5.29%	8681	9.71%
SANTIAGO RODRIGUEZ	350	0.39%	220	0.25%	570	0.64%
SANTO DOMINGO	13455	15.06%	11411	12.77%	24866	27.82%
VALVERDE	929	1.04%	1213	1.36%	2142	2.40%
Total	43700	48.90%	45669	51.10%	89369	100.00%

Region atendio parto	Grupos Etarios de Madres	<14 años		15 a 19 años		20 a 24 años		25 a 29 años		30 a 34 años		35 a 39 años		40 a 44 años		45 o mas		N/D		Total	
		Provincia madre	No.	%	No.	%	No.	%	No.	%	No.	%	No.	%	No.	%	No.	%	No.	%	No.
All	AZUA	19	0.02%	669	0.75%	853	0.95%	687	0.77%	305	0.34%	105	0.12%	25	0.03%	4	0.00%			2667	2.98%
	BAORUCO	3	0.00%	191	0.21%	262	0.29%	211	0.24%	117	0.13%	49	0.05%	13	0.01%	3	0.00%			849	0.95%
	BARAHONA	19	0.02%	683	0.76%	878	0.98%	632	0.71%	316	0.35%	156	0.17%	33	0.04%	4	0.00%			2721	3.04%
	DAJABON	9	0.01%	217	0.24%	311	0.35%	206	0.23%	102	0.11%	52	0.06%	16	0.02%					913	1.02%
Year	DISTRITO NACIONAL	66	0.07%	1672	1.87%	2421	2.71%	1874	2.10%	1036	1.16%	479	0.54%	117	0.13%	11	0.01%			7676	8.59%
2018	DUARTE	13	0.01%	329	0.37%	389	0.44%	194	0.22%	90	0.10%	40	0.04%	6	0.01%					1061	1.19%
	EL SEIBO	2	0.00%	157	0.18%	219	0.25%	143	0.16%	85	0.10%	34	0.04%	6	0.01%	1	0.00%	3	0.00%	650	0.73%
	ELIAS PINA	6	0.01%	270	0.30%	394	0.44%	255	0.29%	138	0.15%	68	0.08%	17	0.02%	4	0.00%			1152	1.29%
	ESPAILLAT	15	0.02%	332	0.37%	411	0.46%	268	0.30%	139	0.16%	56	0.06%	18	0.02%			1	0.00%	1240	1.39%
Month	HATO MAYOR	17	0.02%	156	0.17%	230	0.26%	155	0.17%	68	0.08%	28	0.03%	7	0.01%					661	0.74%
	HERMANAS MIRABAL	7	0.01%	160	0.18%	214	0.24%	154	0.17%	73	0.08%	38	0.04%	2	0.00%	1	0.00%			649	0.73%
All	INDEPENDENCIA	2	0.00%	138	0.15%	153	0.17%	124	0.14%	78	0.09%	45	0.05%	8	0.01%					548	0.61%
	LA ALTAGRACIA	3	0.00%	338	0.38%	547	0.61%	607	0.68%	134	0.15%	58	0.06%	15	0.02%	5	0.01%	1	0.00%	1708	1.91%
	LA ROMANA	20	0.02%	557	0.62%	796	0.89%	489	0.55%	296	0.33%	116	0.13%	33	0.04%	2	0.00%			2309	2.58%
	LA VEGA	29	0.03%	775	0.87%	985	1.10%	650	0.73%	313	0.35%	132	0.15%	19	0.02%	1	0.00%	1	0.00%	2905	3.25%
	MARIA TRINIDAD SANCHEZ	6	0.01%	143	0.16%	178	0.20%	91	0.10%	41	0.05%	25	0.03%	6	0.01%					490	0.55%
	MONSEÑOR NOUEL	3	0.00%	25	0.03%	39	0.04%	18	0.02%	12	0.01%	3	0.00%							100	0.11%
	MONTE CRISTI	12	0.01%	243	0.27%	378	0.42%	226	0.25%	132	0.15%	37	0.04%	14	0.02%	1	0.00%			1043	1.17%
	MONTE PLATA	20	0.02%	512	0.57%	738	0.83%	618	0.69%	316	0.35%	144	0.16%	23	0.03%					2371	2.65%
	PEDERNALES			50	0.06%	58	0.06%	41	0.05%	27	0.03%	10	0.01%	2	0.00%					188	0.21%
	PERAVIA	13	0.01%	445	0.50%	727	0.81%	509	0.57%	210	0.23%	102	0.11%	21	0.02%	2	0.00%			2029	2.27%
	PUERTO PLATA	29	0.03%	748	0.84%	965	1.08%	649	0.73%	365	0.41%	151	0.17%	29	0.03%	4	0.00%			2940	3.29%
	SAMANA	3	0.00%	103	0.12%	187	0.21%	114	0.13%	57	0.06%	30	0.03%	3	0.00%					497	0.56%
	SAN CRISTOBAL	59	0.07%	2196	2.46%	2743	3.07%	1697	1.90%	907	1.01%	395	0.44%	70	0.08%	5	0.01%			8072	9.03%
	SAN JOSE DE OCOA	1	0.00%	33	0.04%	43	0.05%	27	0.03%	12	0.01%	2	0.00%	1	0.00%	1	0.00%			120	0.13%
	SAN JUAN	40	0.04%	535	0.60%	666	0.75%	488	0.55%	237	0.27%	120	0.13%	13	0.01%	2	0.00%			2101	2.35%
	SAN PEDRO DE MACORIS	11	0.01%	471	0.53%	536	0.60%	387	0.43%	181	0.20%	89	0.10%	21	0.02%	2	0.00%			1698	1.90%
	SANCHEZ RAMIREZ	5	0.01%	252	0.28%	378	0.42%	249	0.28%	99	0.11%	38	0.04%	6	0.01%	1	0.00%			1028	1.15%
	SANTIAGO	71	0.08%	2036	2.28%	2549	2.85%	1707	1.91%	907	1.01%	423	0.47%	93	0.10%	7	0.01%			7793	8.72%
	SANTIAGO RODRIGUEZ	4	0.00%	117	0.13%	210	0.23%	130	0.15%	68	0.08%	44	0.05%	2	0.00%					575	0.64%
	SANTO DOMINGO	204	0.23%	5809	6.50%	9096	10.18%	7299	8.17%	4086	4.57%	1850	2.07%	406	0.45%	30	0.03%			28780	32.20%
	VALVERDE	19	0.02%	416	0.47%	643	0.72%	438	0.49%	203	0.23%	96	0.11%	17	0.02%	3	0.00%			1835	2.05%
	Total	730	0.82%	20778	23.25%	29197	32.67%	21337	23.88%	11150	12.48%	5015	5.61%	1062	1.19%	94	0.11%	6	0.01%	89369	100.00%