

50585

Nacimientos

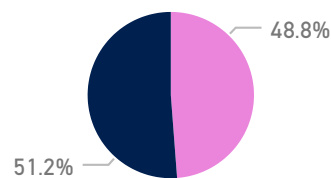


24684

FEMENINO MASCULINO

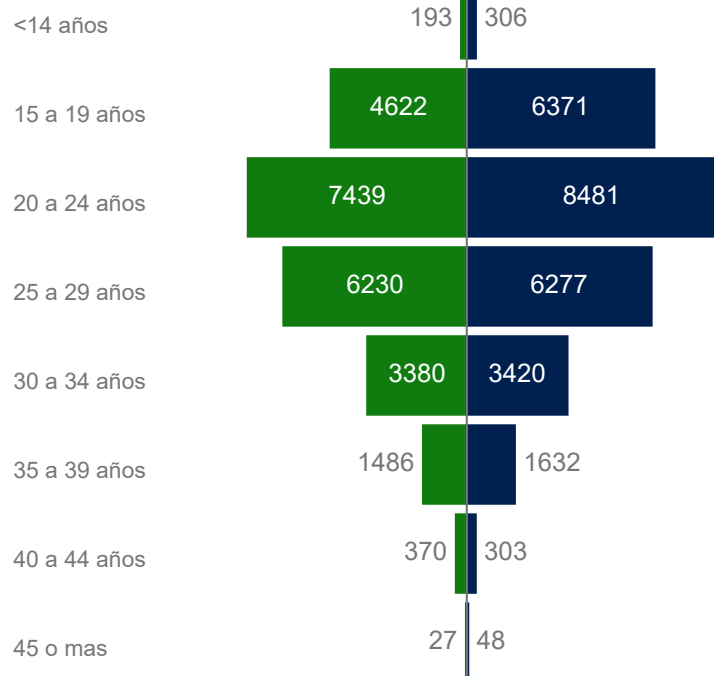


25901



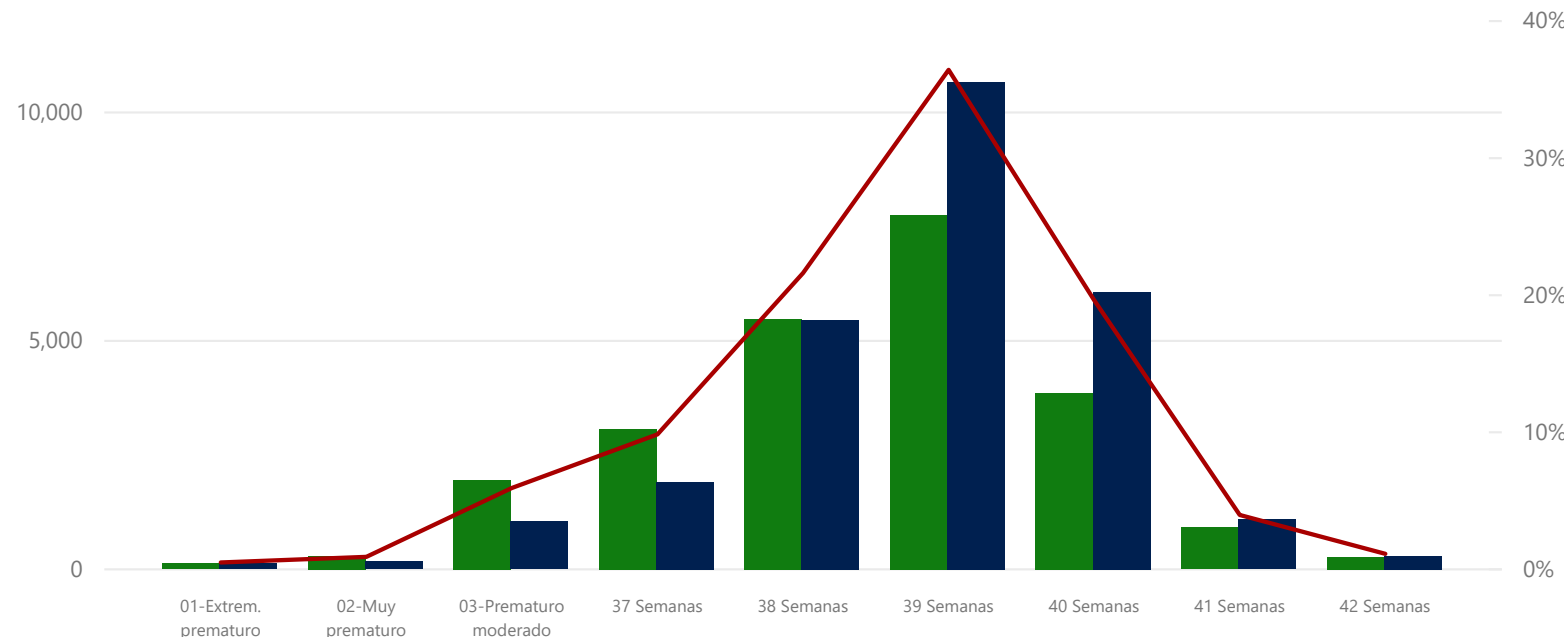
Nacimiento por grupo etario madre y tipo de parto

Cesárea Vaginal

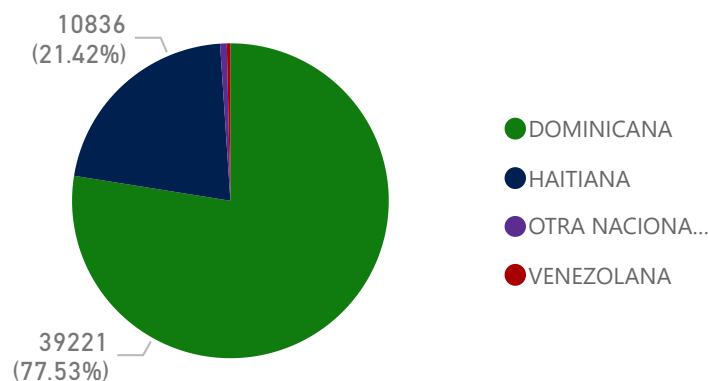


Nacimientos por edad gestacional y tipo de parto

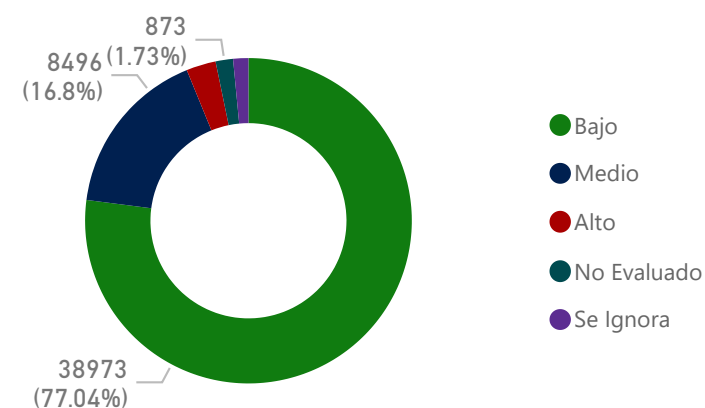
Cesárea Vaginal % Nacimientos por edad gestacional



Nacimientos por Nacionalidad de la madre



Nacimientos por Riesgo neonatal



Region atendio parto ▼

 All ▼

 Year ▼

 2020 ▼

 Month ▼

 All ▼

Region atención del parto vs Region residencia de la Madre

Region de atención del parto VS Region residencia de la madre

Region atención	R0	R1	R2	R3	R4	R5	R6	R7	R8	Total
REGION 0	17542	525	1	14	20	16	25		3	18146
REGION 1	6	4031				1	30			4068
REGION 2	5	2	8852	6	2	4	2	176	52	9101
REGION 3	5		17	2483					21	2526
REGION 4	1				2518			1		2520
REGION 5	13					4723				4736
REGION 6	9		1		10		3869			3889
REGION 7			80			2	27	3613		3722
REGION 8	1		5	1					1870	1877
Total	17582	4558	8956	2504	2550	4746	3953	3790	1946	50585

Provincia atendió parto	No.	%
DISTRITO NACIONAL	9323	18.43%
SANTIAGO	7726	15.27%
SANTO DOMINGO	7618	15.06%
SAN CRISTOBAL	2914	5.76%
VALVERDE	2435	4.81%
SAN JUAN	1859	3.68%
BARAHONA	1790	3.54%
LA ALTAGRACIA	1790	3.54%
AZUA	1498	2.96%
LA VEGA	1481	2.93%
SAN PEDRO DE MACORIS	1330	2.63%
PUERTO PLATA	1314	2.60%
DUARTE	1108	2.19%
PERAVIA	1022	2.02%
LA ROMANA	990	1.96%
MONTE PLATA	937	1.85%
MONTE CRISTI	643	1.27%
MARIA TRINIDAD SANCHEZ	630	1.25%
ELIAS PINA	531	1.05%
SAMANA	468	0.93%
EL SEIBO	462	0.91%
BAORUCO	425	0.84%
SAN JOSE DE OCOA	401	0.79%
SANCHEZ RAMIREZ	345	0.68%
SANTIAGO RODRIGUEZ	331	0.65%
HERMANAS MIRABAL	320	0.63%
DAJABON	313	0.62%
INDEPENDENCIA	174	0.34%
HATO MAYOR	164	0.32%
PEDERNALES	131	0.26%
ESPAÑA	61	0.12%
Total	50585	100.00%

Establecimiento	No.	%
HOSPITAL PRESIDENTE ESTRELLA URENA SANTIAGO	7118	14.07%
HOSPITAL DE LA MUJER DOMINICANA	5560	10.99%
MATERNAL DR. REYNALDO ALMANZAR	3990	7.89%
MATERNIDAD NUESTRA SEÑORA DE LA ALTAGRACIA	3169	6.26%
HOSPITAL DR JOSE FRANCISCO PENA GOMEZ	2260	4.47%
NUESTRA SENORA DE LA ALTAGRACIA	1770	3.50%
SAN LORENZO DE LOS MINA (MATERNAL-INFANTIL)	1716	3.39%
JUAN PABLO PINA	1596	3.16%
HOSPITAL JAIME MOTA	1461	2.89%
TAIWAN 19 DE MARZO	1442	2.85%
DR. ALEJANDRO CABRAL	1323	2.62%
RICARDO LIMARDO	1056	2.09%
NUESTRA SENORA DE REGLA	1015	2.01%
DR FRANCISCO ANTONIO GONZALVO	988	1.95%
DR ANTONIO MUSA	978	1.93%
DR LUIS MORILLO KING	829	1.64%
GENERAL DOCTOR VINICIO CALVENTI	644	1.27%
HOSPITAL MUNICIPAL DE HAINA	571	1.13%
SAN VICENTE DE PAUL	532	1.05%
DR MARCELINO VELEZ SANTANA	519	1.03%
DR. ANGEL CONTRERAS	479	0.95%
Total	50585	100.00%

Region atendio parto ▼

 All ▼

 Year ▼

 2020 ▼

 Month ▼

 All ▼

Desagregación por provincia, grupo etareo y tipo de partos

Tipo de parto Grupos Etarios de Madres	Cesárea		Vaginal		Total	
	Nacidos Vivos	% Nacidos Vivos	Nacidos Vivos	% Nacidos Vivos	Nacidos Vivos	% Nacidos Vivos
< 14 años	193	0.38%	306	0.60%	499	0.99%
15 a 19 años	4622	9.14%	6371	12.59%	10993	21.73%
20 a 24 años	7439	14.71%	8481	16.77%	15920	31.47%
25 a 29 años	6230	12.32%	6277	12.41%	12507	24.72%
30 a 34 años	3380	6.68%	3420	6.76%	6800	13.44%
35 a 39 años	1486	2.94%	1632	3.23%	3118	6.16%
40 a 44 años	370	0.73%	303	0.60%	673	1.33%
45 o mas	27	0.05%	48	0.09%	75	0.15%
Total	23747	46.94%	26838	53.06%	50585	100.00%

Tipo de parto Month	Cesárea		Vaginal		Total	
	Cantidad	%	Cantidad	%	Cantidad	%
January	4252	8.41%	4801	9.49%	9053	17.90%
February	3606	7.13%	4030	7.97%	7636	15.10%
March	3227	6.38%	3520	6.96%	6747	13.34%
April	2721	5.38%	3290	6.50%	6011	11.88%
May	2799	5.53%	3426	6.77%	6225	12.31%
June	3207	6.34%	3416	6.75%	6623	13.09%
July	3289	6.50%	3589	7.09%	6878	13.60%
August	646	1.28%	766	1.51%	1412	2.79%
Total	23747	46.94%	26838	53.06%	50585	100.00%

Tipo de parto Provincia atendió parto	Cesárea		Vaginal		Total	
	Cantidad	%	Cantidad	%	Cantidad	%
AZUA	561	1.11%	937	1.85%	1498	2.96%
BAORUCO	164	0.32%	261	0.52%	425	0.84%
BARAHONA	930	1.84%	860	1.70%	1790	3.54%
DAJABON	89	0.18%	224	0.44%	313	0.62%
DISTRITO NACIONAL	4892	9.67%	4431	8.76%	9323	18.43%
DUARTE	700	1.38%	408	0.81%	1108	2.19%
EL SEIBO	227	0.45%	235	0.46%	462	0.91%
ELIAS PINA	79	0.16%	452	0.89%	531	1.05%
ESPAILLAT	33	0.07%	28	0.06%	61	0.12%
HATO MAYOR	51	0.10%	113	0.22%	164	0.32%
HERMANAS MIRABAL	182	0.36%	138	0.27%	320	0.63%
INDEPENDENCIA	70	0.14%	104	0.21%	174	0.34%
LA ALTAGRACIA	627	1.24%	1163	2.30%	1790	3.54%
LA ROMANA	464	0.92%	526	1.04%	990	1.96%
LA VEGA	844	1.67%	637	1.26%	1481	2.93%
MARIA TRINIDAD SANCHEZ	365	0.72%	265	0.52%	630	1.25%
MONSEÑOR NOUEL	24	0.05%	27	0.05%	51	0.10%
MONTE CRISTI	174	0.34%	469	0.93%	643	1.27%
MONTE PLATA	451	0.89%	486	0.96%	937	1.85%
PEDERNALES	73	0.14%	58	0.11%	131	0.26%
PERAVIA	451	0.89%	571	1.13%	1022	2.02%
PUERTO PLATA	519	1.03%	795	1.57%	1314	2.60%
SAMANA	222	0.44%	246	0.49%	468	0.93%
SAN CRISTOBAL	1097	2.17%	1817	3.59%	2914	5.76%
SAN JOSE DE OCOA	232	0.46%	169	0.33%	401	0.79%
SAN JUAN	638	1.26%	1221	2.41%	1859	3.68%
SAN PEDRO DE MACORIS	701	1.39%	629	1.24%	1330	2.63%
SANCHEZ RAMIREZ	231	0.46%	114	0.23%	345	0.68%
SANTIAGO	3483	6.89%	4243	8.39%	7726	15.27%
SANTIAGO RODRIGUEZ	213	0.42%	118	0.23%	331	0.65%
SANTO DOMINGO	4039	7.98%	3579	7.08%	7618	15.06%
VALVERDE	921	1.82%	1514	2.99%	2435	4.81%
Total	23747	46.94%	26838	53.06%	50585	100.00%

Region atendio parto	Grupos Etarios de Madres	<14 años		15 a 19 años		20 a 24 años		25 a 29 años		30 a 34 años		35 a 39 años		40 a 44 años		45 o mas		Total	
		Provincia madre	No.	%	No.	%	No.	%	No.	%	No.	%	No.	%	No.	%	No.	%	No.
All	AZUA	28	0.06%	385	0.76%	478	0.94%	352	0.70%	181	0.36%	94	0.19%	13	0.03%	2	0.00%	1533	3.03%
	BAORUCO	5	0.01%	132	0.26%	184	0.36%	152	0.30%	90	0.18%	41	0.08%	4	0.01%	3	0.01%	611	1.21%
	BARAHONA	29	0.06%	309	0.61%	499	0.99%	362	0.72%	186	0.37%	94	0.19%	17	0.03%	3	0.01%	1499	2.96%
	DAJABON	5	0.01%	96	0.19%	134	0.26%	92	0.18%	57	0.11%	23	0.05%	12	0.02%	4	0.01%	423	0.84%
Year	DISTRITO NACIONAL	36	0.07%	692	1.37%	1262	2.49%	1142	2.26%	694	1.37%	357	0.71%	70	0.14%	6	0.01%	4259	8.42%
2020	DUARTE	5	0.01%	292	0.58%	287	0.57%	235	0.46%	131	0.26%	63	0.12%	14	0.03%	1	0.00%	1028	2.03%
	EL SEIBO	5	0.01%	118	0.23%	173	0.34%	109	0.22%	59	0.12%	23	0.05%	8	0.02%			495	0.98%
	ELIAS PINA	9	0.02%	132	0.26%	190	0.38%	136	0.27%	82	0.16%	44	0.09%	10	0.02%	1	0.00%	604	1.19%
	ESPAILLAT	1	0.00%	32	0.06%	35	0.07%	28	0.06%	20	0.04%	6	0.01%	2	0.00%			124	0.25%
Month	HATO MAYOR	4	0.01%	77	0.15%	104	0.21%	84	0.17%	36	0.07%	16	0.03%	6	0.01%			327	0.65%
	HERMANAS MIRABAL	2	0.00%	70	0.14%	90	0.18%	77	0.15%	42	0.08%	17	0.03%	2	0.00%			300	0.59%
All	INDEPENDENCIA	1	0.00%	64	0.13%	82	0.16%	67	0.13%	31	0.06%	17	0.03%	5	0.01%	1	0.00%	268	0.53%
	LA ALTAGRACIA	15	0.03%	306	0.60%	412	0.81%	789	1.56%	168	0.33%	145	0.29%	15	0.03%	4	0.01%	1854	3.67%
	LA ROMANA	9	0.02%	238	0.47%	295	0.58%	216	0.43%	125	0.25%	45	0.09%	12	0.02%	1	0.00%	941	1.86%
	LA VEGA	16	0.03%	363	0.72%	546	1.08%	311	0.61%	177	0.35%	63	0.12%	13	0.03%	2	0.00%	1491	2.95%
	MARIA TRINIDAD SANCHEZ	8	0.02%	160	0.32%	187	0.37%	162	0.32%	65	0.13%	29	0.06%	10	0.02%			621	1.23%
	MONSEÑOR NOUEL	3	0.01%	20	0.04%	41	0.08%	18	0.04%	4	0.01%	6	0.01%					92	0.18%
	MONTE CRISTI	2	0.00%	235	0.46%	354	0.70%	242	0.48%	122	0.24%	50	0.10%	8	0.02%			1013	2.00%
	MONTE PLATA	4	0.01%	232	0.46%	349	0.69%	263	0.52%	133	0.26%	55	0.11%	12	0.02%			1048	2.07%
	PEDERNALES	2	0.00%	31	0.06%	56	0.11%	42	0.08%	24	0.05%	12	0.02%	5	0.01%			172	0.34%
	PERAVIA	7	0.01%	289	0.57%	335	0.66%	201	0.40%	109	0.22%	41	0.08%	13	0.03%			995	1.97%
	PUERTO PLATA	19	0.04%	356	0.70%	454	0.90%	308	0.61%	201	0.40%	72	0.14%	23	0.05%	1	0.00%	1434	2.83%
	SAMANA	7	0.01%	105	0.21%	170	0.34%	157	0.31%	68	0.13%	43	0.09%	5	0.01%			555	1.10%
	SAN CRISTOBAL	28	0.06%	765	1.51%	1047	2.07%	722	1.43%	378	0.75%	168	0.33%	31	0.06%	2	0.00%	3141	6.21%
	SAN JOSE DE OCOA	10	0.02%	91	0.18%	138	0.27%	99	0.20%	64	0.13%	17	0.03%	2	0.00%	1	0.00%	422	0.83%
	SAN JUAN	25	0.05%	397	0.78%	584	1.15%	448	0.89%	247	0.49%	96	0.19%	17	0.03%	2	0.00%	1816	3.59%
	SAN PEDRO DE MACORIS	8	0.02%	279	0.55%	327	0.65%	284	0.56%	146	0.29%	63	0.12%	21	0.04%	1	0.00%	1129	2.23%
	SANCHEZ RAMIREZ	5	0.01%	89	0.18%	130	0.26%	91	0.18%	29	0.06%	15	0.03%	4	0.01%			363	0.72%
	SANTIAGO	102	0.20%	1768	3.50%	2321	4.59%	1726	3.41%	989	1.96%	400	0.79%	77	0.15%	15	0.03%	7398	14.62%
	SANTIAGO RODRIGUEZ	4	0.01%	76	0.15%	124	0.25%	77	0.15%	48	0.09%	16	0.03%	4	0.01%			349	0.69%
	SANTO DOMINGO	72	0.14%	2347	4.64%	3862	7.63%	3089	6.11%	1811	3.58%	860	1.70%	211	0.42%	23	0.05%	12275	24.27%
	VALVERDE	23	0.05%	447	0.88%	670	1.32%	426	0.84%	283	0.56%	127	0.25%	27	0.05%	2	0.00%	2005	3.96%
	Total	499	0.99%	10993	21.73%	15920	31.47%	12507	24.72%	6800	13.44%	3118	6.16%	673	1.33%	75	0.15%	50585	100.00%