

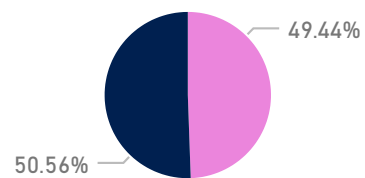
104777

Nacimientos



51804

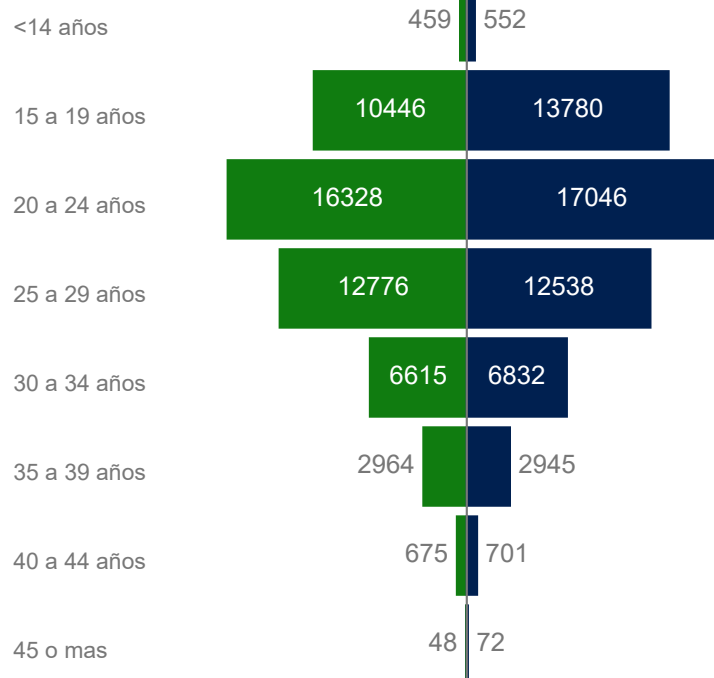
FEMENINO MASCULINO



52973

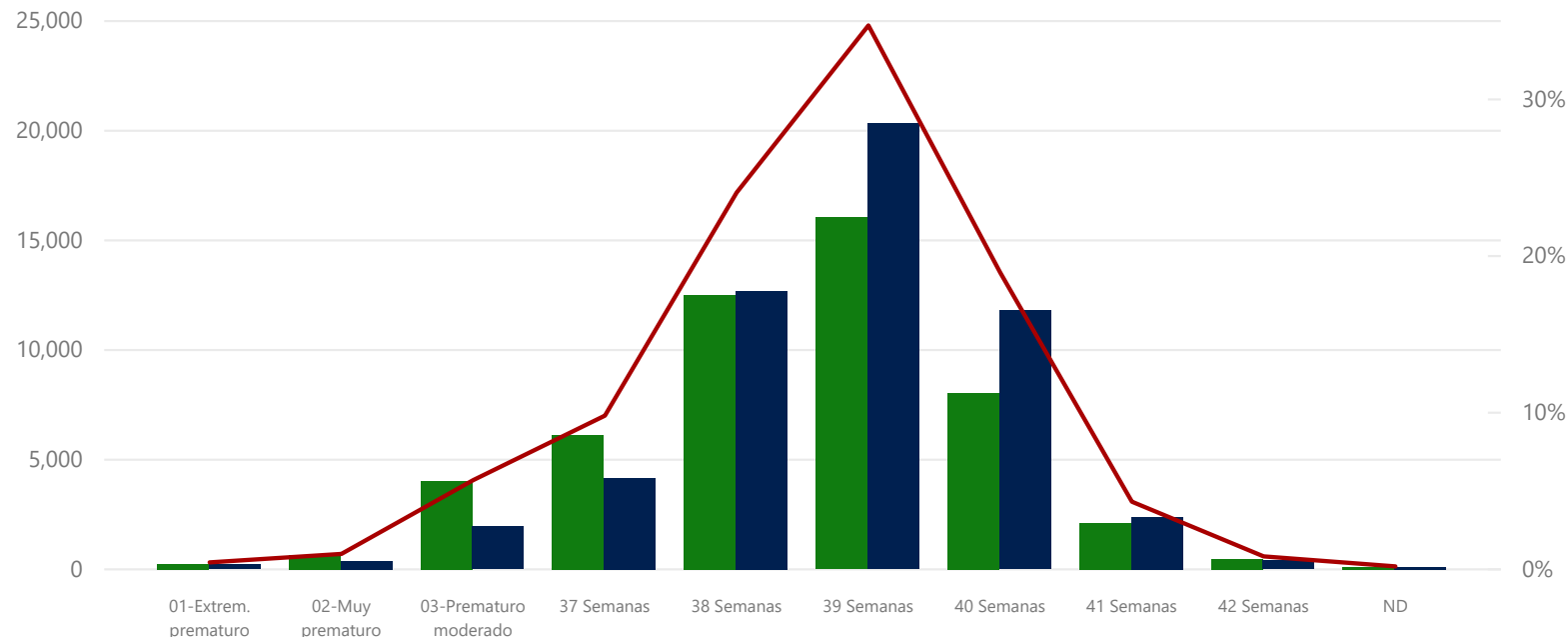
Nacimiento por grupo etario madre y tipo de parto

Cesárea Vaginal

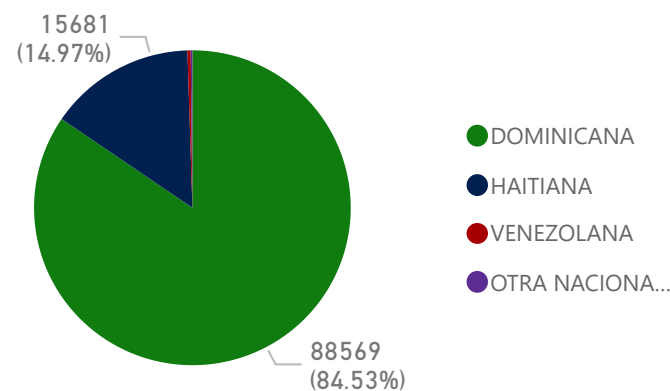


Nacimientos por edad gestacional y tipo de parto

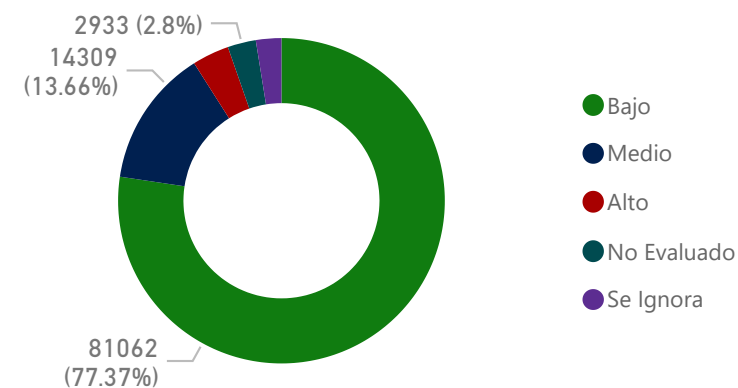
Cesárea Vaginal % Nacimientos por edad gestacional



Nacimientos por Nacionalidad de la madre



Nacimientos por Riesgo neonatal



Region atendio parto ▼

 All ▼

 Year ▼

 2019 ▼

 Month ▼

 All ▼

Region atención del parto vs Region residencia de la Madre

Region de atención del parto VS Region residencia de la madre

Region atención	R0	R1	R2	R3	R4	R5	R6	R7	R8	Total
REGION 0	41290	909	11	7	32	70	52	3	19	42393
REGION 1	15	9677		3	4	1	92			9792
REGION 2	14	3	12297	18	1	5	6	279	73	12696
REGION 3	9		59	4844		5	1	1	41	4960
REGION 4	4				4911		2			4917
REGION 5	54	1		1		11814		3		11873
REGION 6	19	5			29		7669			7722
REGION 7			74	2			62	5151	1	5290
REGION 8	9	21	14	4		1	1	2	5082	5134
Total	41414	10616	12455	4879	4977	11896	7885	5439	5216	104777

Provincia atendió parto	No.	%
SANTO DOMINGO	26563	25.35%
DISTRITO NACIONAL	13421	12.81%
SANTIAGO	8373	7.99%
SAN CRISTOBAL	6950	6.63%
LA ALTAGRACIA	4413	4.21%
LA VEGA	3800	3.63%
SAN JUAN	3637	3.47%
BARAHONA	3568	3.41%
SAN PEDRO DE MACORIS	3533	3.37%
PUERTO PLATA	2820	2.69%
AZUA	2812	2.68%
VALVERDE	2489	2.38%
PERAVIA	2413	2.30%
MONTE PLATA	2409	2.30%
LA ROMANA	2281	2.18%
DUARTE	1908	1.82%
ESPAILLAT	1503	1.43%
MARIA TRINIDAD SANCHEZ	1307	1.25%
ELIAS PINA	1273	1.21%
MONTE CRISTI	1079	1.03%
DAJABON	1064	1.02%
SANCHEZ RAMIREZ	1057	1.01%
SAMANA	1024	0.98%
EL SEIBO	907	0.87%
HATO MAYOR	739	0.71%
HERMANAS MIRABAL	721	0.69%
SANTIAGO RODRIGUEZ	658	0.63%
BAORUCO	534	0.51%
INDEPENDENCIA	519	0.50%
SAN JOSE DE OCOA	429	0.41%
Total	104777	100.00%

Establecimiento	No.	%
SAN LORENZO DE LOS MINA (MATERNO-INFANTIL)	9822	9.37%
MATERNIDAD NUESTRA SEÑORA DE LA ALTAGRACIA	8763	8.36%
MATERNO DR. REYNALDO ALMANZAR	8719	8.32%
HOSPITAL PRESIDENTE ESTRELLA URENA SANTIAGO	6571	6.27%
NUESTRA SENORA DE LA ALTAGRACIA	4347	4.15%
HOSPITAL DE LA MUJER DOMINICANA	4042	3.86%
JUAN PABLO PINA	3944	3.76%
HOSPITAL JAIME MOTA	3134	2.99%
DR MARCELINO VELEZ SANTANA	3081	2.94%
DR ANTONIO MUSA	2963	2.83%
TAIWAN 19 DE MARZO	2699	2.58%
DR. ALEJANDRO CABRAL	2569	2.45%
DR LUIS MORILLO KING	2476	2.36%
RICARDO LIMARDO	2400	2.29%
NUESTRA SENORA DE REGLA	2380	2.27%
DR FRANCISCO ANTONIO GONZALVO	2279	2.18%
HOSPITAL DR JOSE FRANCISCO PENA GOMEZ	1926	1.84%
SAN VICENTE DE PAUL	1700	1.62%
GENERAL DOCTOR VINICIO CALVENTI	1686	1.61%
HOSPITAL MUNICIPAL DE HAINA	1408	1.34%
TORIBIO BENCOSME	1404	1.34%
Total	104777	100.00%

Desagregación por provincia, grupo etareo y tipo de partos

Tipo de parto	Cesárea		Vaginal		Total	
Grupos Etarios de Madres	Nacidos Vivos	% Nacidos Vivos	Nacidos Vivos	% Nacidos Vivos	Nacidos Vivos	% Nacidos Vivos
< 14 años	459	0.44%	552	0.53%	1011	0.96%
15 a 19 años	10446	9.97%	13780	13.15%	24226	23.12%
20 a 24 años	16328	15.58%	17046	16.27%	33374	31.85%
25 a 29 años	12776	12.19%	12538	11.97%	25314	24.16%
30 a 34 años	6615	6.31%	6832	6.52%	13447	12.83%
35 a 39 años	2964	2.83%	2945	2.81%	5909	5.64%
40 a 44 años	675	0.64%	701	0.67%	1376	1.31%
45 o mas	48	0.05%	72	0.07%	120	0.11%
Total	50311	48.02%	54466	51.98%	104777	100.00%

Tipo de parto	Cesárea		Vaginal		Total	
Month	Cantidad	%	Cantidad	%	Cantidad	%
January	4306	4.11%	4491	4.29%	8797	8.40%
February	3761	3.59%	3800	3.63%	7561	7.22%
March	3705	3.54%	4019	3.84%	7724	7.37%
April	3673	3.51%	3711	3.54%	7384	7.05%
May	3968	3.79%	4086	3.90%	8054	7.69%
June	3767	3.60%	4095	3.91%	7862	7.50%
July	4276	4.08%	4510	4.30%	8786	8.39%
August	4478	4.27%	4840	4.62%	9318	8.89%
September	4847	4.63%	5542	5.29%	10389	9.92%
October	4948	4.72%	5404	5.16%	10352	9.88%
November	4362	4.16%	5105	4.87%	9467	9.04%
December	4220	4.03%	4863	4.64%	9083	8.67%
Total	50311	48.02%	54466	51.98%	104777	100.00%

Tipo de parto	Cesárea		Vaginal		Total	
Provincia atendió parto	Cantidad	%	Cantidad	%	Cantidad	%
AZUA	1196	1.14%	1616	1.54%	2812	2.68%
BAORUCO	178	0.17%	356	0.34%	534	0.51%
BARAHONA	1756	1.68%	1812	1.73%	3568	3.41%
DAJABON	297	0.28%	767	0.73%	1064	1.02%
DISTRITO NACIONAL	7274	6.94%	6147	5.87%	13421	12.81%
DUARTE	1093	1.04%	815	0.78%	1908	1.82%
EL SEIBO	436	0.42%	471	0.45%	907	0.87%
ELIAS PINA	208	0.20%	1065	1.02%	1273	1.21%
ESPAILLAT	723	0.69%	780	0.74%	1503	1.43%
HATO MAYOR	333	0.32%	406	0.39%	739	0.71%
HERMANAS MIRABAL	440	0.42%	281	0.27%	721	0.69%
INDEPENDENCIA	141	0.13%	378	0.36%	519	0.50%
LA ALTAGRACIA	1507	1.44%	2906	2.77%	4413	4.21%
LA ROMANA	933	0.89%	1348	1.29%	2281	2.18%
LA VEGA	2047	1.95%	1753	1.67%	3800	3.63%
MARIA TRINIDAD SANCHEZ	777	0.74%	530	0.51%	1307	1.25%
MONSEÑOR NOUEL	88	0.08%	189	0.18%	277	0.26%
MONTE CRISTI	489	0.47%	590	0.56%	1079	1.03%
MONTE PLATA	1270	1.21%	1139	1.09%	2409	2.30%
PEDERNALES	139	0.13%	157	0.15%	296	0.28%
PERAVIA	1119	1.07%	1294	1.24%	2413	2.30%
PUERTO PLATA	1157	1.10%	1663	1.59%	2820	2.69%
SAMANA	492	0.47%	532	0.51%	1024	0.98%
SAN CRISTOBAL	2802	2.67%	4148	3.96%	6950	6.63%
SAN JOSE DE OCOA	262	0.25%	167	0.16%	429	0.41%
SAN JUAN	1352	1.29%	2285	2.18%	3637	3.47%
SAN PEDRO DE MACORIS	1656	1.58%	1877	1.79%	3533	3.37%
SANCHEZ RAMIREZ	665	0.63%	392	0.37%	1057	1.01%
SANTIAGO	3826	3.65%	4547	4.34%	8373	7.99%
SANTIAGO RODRIGUEZ	387	0.37%	271	0.26%	658	0.63%
SANTO DOMINGO	14128	13.48%	12435	11.87%	26563	25.35%
VALVERDE	1140	1.09%	1349	1.29%	2489	2.38%
Total	50311	48.02%	54466	51.98%	104777	100.00%

Region atendio parto	Grupos Etarios de Madres	<14 años		15 a 19 años		20 a 24 años		25 a 29 años		30 a 34 años		35 a 39 años		40 a 44 años		45 o mas		Total	
		Provincia madre	No.	%	No.	%	No.	%	No.	%	No.	%	No.	%	No.	%	No.	%	No.
All	AZUA	50	0.05%	746	0.71%	943	0.90%	649	0.62%	339	0.32%	139	0.13%	25	0.02%	2	0.00%	2893	2.76%
	BAORUCO	13	0.01%	242	0.23%	284	0.27%	261	0.25%	143	0.14%	68	0.06%	13	0.01%	2	0.00%	1026	0.98%
	BARAHONA	36	0.03%	713	0.68%	900	0.86%	609	0.58%	325	0.31%	146	0.14%	36	0.03%	1	0.00%	2766	2.64%
	DAJABON	11	0.01%	287	0.27%	388	0.37%	227	0.22%	175	0.17%	75	0.07%	26	0.02%	5	0.00%	1194	1.14%
Year	DISTRITO NACIONAL	50	0.05%	1587	1.51%	2185	2.09%	1806	1.72%	1062	1.01%	476	0.45%	109	0.10%	9	0.01%	7284	6.95%
2019	DUARTE	30	0.03%	443	0.42%	536	0.51%	388	0.37%	191	0.18%	75	0.07%	16	0.02%	1	0.00%	1680	1.60%
	EL SEIBO	17	0.02%	259	0.25%	307	0.29%	232	0.22%	107	0.10%	47	0.04%	20	0.02%			989	0.94%
	ELIAS PINA	18	0.02%	400	0.38%	471	0.45%	286	0.27%	197	0.19%	93	0.09%	21	0.02%	3	0.00%	1489	1.42%
	ESPAILLAT	13	0.01%	439	0.42%	509	0.49%	427	0.41%	218	0.21%	90	0.09%	9	0.01%	4	0.00%	1709	1.63%
Month	HATO MAYOR	6	0.01%	187	0.18%	324	0.31%	223	0.21%	122	0.12%	45	0.04%	7	0.01%			914	0.87%
	HERMANAS MIRABAL	5	0.00%	171	0.16%	248	0.24%	171	0.16%	81	0.08%	42	0.04%	4	0.00%			722	0.69%
All	INDEPENDENCIA	5	0.00%	169	0.16%	219	0.21%	166	0.16%	117	0.11%	53	0.05%	16	0.02%			745	0.71%
	LA ALTAGRACIA	30	0.03%	1013	0.97%	1275	1.22%	1592	1.52%	367	0.35%	254	0.24%	33	0.03%	6	0.01%	4570	4.36%
	LA ROMANA	20	0.02%	534	0.51%	723	0.69%	516	0.49%	292	0.28%	135	0.13%	35	0.03%	5	0.00%	2260	2.16%
	LA VEGA	34	0.03%	910	0.87%	1300	1.24%	850	0.81%	460	0.44%	169	0.16%	54	0.05%	8	0.01%	3785	3.61%
	MARIA TRINIDAD SANCHEZ	12	0.01%	342	0.33%	444	0.42%	320	0.31%	122	0.12%	64	0.06%	16	0.02%	1	0.00%	1321	1.26%
	MONSEÑOR NOUEL	5	0.00%	76	0.07%	105	0.10%	95	0.09%	32	0.03%	19	0.02%	3	0.00%			335	0.32%
	MONTE CRISTI	17	0.02%	386	0.37%	517	0.49%	352	0.34%	175	0.17%	85	0.08%	23	0.02%	4	0.00%	1559	1.49%
	MONTE PLATA	28	0.03%	624	0.60%	972	0.93%	688	0.66%	323	0.31%	160	0.15%	21	0.02%	3	0.00%	2819	2.69%
	PEDERNALES	3	0.00%	77	0.07%	141	0.13%	110	0.10%	68	0.06%	31	0.03%	8	0.01%	2	0.00%	440	0.42%
	PERAVIA	18	0.02%	579	0.55%	771	0.74%	526	0.50%	282	0.27%	109	0.10%	21	0.02%	1	0.00%	2307	2.20%
	PUERTO PLATA	36	0.03%	708	0.68%	972	0.93%	690	0.66%	366	0.35%	155	0.15%	43	0.04%	3	0.00%	2973	2.84%
	SAMANA	18	0.02%	240	0.23%	377	0.36%	303	0.29%	146	0.14%	66	0.06%	6	0.01%			1156	1.10%
	SAN CRISTOBAL	73	0.07%	2101	2.01%	2623	2.50%	1695	1.62%	883	0.84%	365	0.35%	79	0.08%	4	0.00%	7823	7.47%
	SAN JOSE DE OCOA	8	0.01%	112	0.11%	168	0.16%	106	0.10%	58	0.06%	27	0.03%	7	0.01%			486	0.46%
	SAN JUAN	49	0.05%	862	0.82%	1164	1.11%	772	0.74%	440	0.42%	159	0.15%	54	0.05%	3	0.00%	3503	3.34%
	SAN PEDRO DE MACORIS	24	0.02%	832	0.79%	1001	0.96%	720	0.69%	375	0.36%	163	0.16%	45	0.04%	3	0.00%	3163	3.02%
	SANCHEZ RAMIREZ	9	0.01%	269	0.26%	415	0.40%	250	0.24%	94	0.09%	46	0.04%	13	0.01%			1096	1.05%
	SANTIAGO	98	0.09%	1905	1.82%	2414	2.30%	1827	1.74%	987	0.94%	413	0.39%	121	0.12%	8	0.01%	7773	7.42%
	SANTIAGO RODRIGUEZ	14	0.01%	169	0.16%	197	0.19%	134	0.13%	102	0.10%	28	0.03%	13	0.01%			657	0.63%
	SANTO DOMINGO	244	0.23%	6339	6.05%	9787	9.34%	7892	7.53%	4557	4.35%	1996	1.90%	456	0.44%	40	0.04%	31311	29.88%
	VALVERDE	17	0.02%	505	0.48%	694	0.66%	431	0.41%	241	0.23%	116	0.11%	23	0.02%	2	0.00%	2029	1.94%
	Total	1011	0.96%	24226	23.12%	33374	31.85%	25314	24.16%	13447	12.83%	5909	5.64%	1376	1.31%	120	0.11%	104777	100.00%