

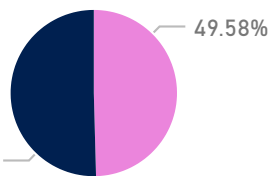
78928

Nacimientos



39129

FEMENINO MASCULINO



39799

Nacimiento por grupo etario madre y tipo de parto

Cesárea Vaginal

(Blank)

<14 años



313 317

15 a 19 años



20 a 24 años



25 a 29 años



30 a 34 años



35 a 39 años



40 a 44 años



45 o mas

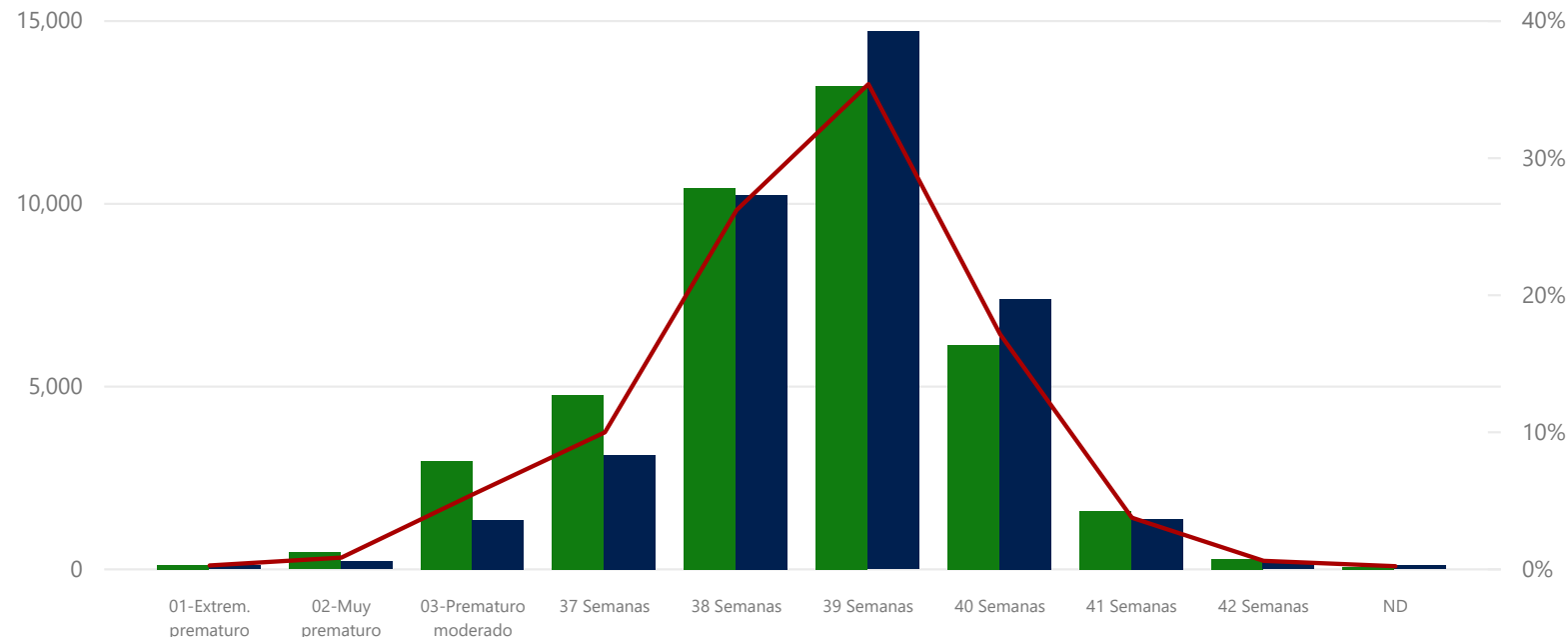


N/D

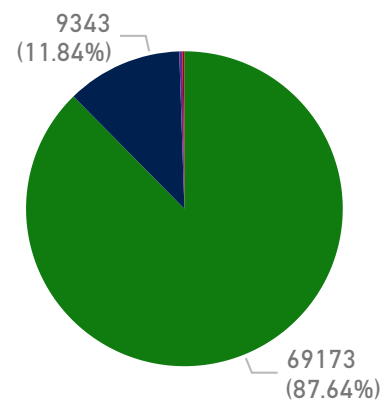


Nacimientos por edad gestacional y tipo de parto

Cesárea Vaginal % Nacimientos por edad gestacional

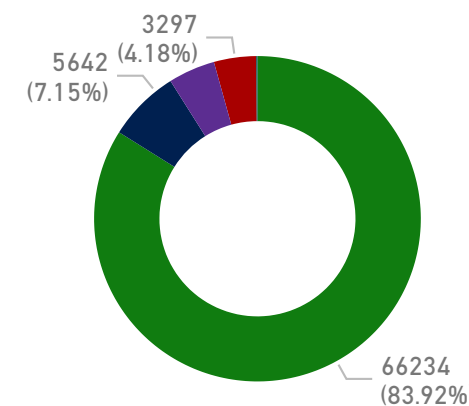


Nacimientos por Nacionalidad de la madre



DOMINICANA
HAITIANA
OTRA NACIONALIDAD
VENEZOLANA

Nacimientos por Riesgo neonatal



Bajo
Medio
Se Ignora
Alto
No Evaluado

Region atendio parto ▼

 All ▼

 Year ▼

 2017 ▼

 Month ▼

 All ▼

Region atención del parto vs Region residencia de la Madre

Region de atención del parto VS Region residencia de la madre

Region atención	R0	R1	R2	R3	R4	R5	R6	R7	R8	Total
REGION 0	35371	1247	25	14	42	159	76	2	17	36953
REGION 1	5	8297		1			6		1	8310
REGION 2	5	1	10692	11	1	3	1	387	79	11180
REGION 3	4		44	2004		1			26	2079
REGION 4		2			3764	1	1			3768
REGION 5	9		2	2	1	5267		1	1	5283
REGION 6	7	1			45	1	5159	1		5214
REGION 7	21		99				13	2132		2265
REGION 8	29	1	15	6		4			3821	3876
Total	35451	9549	10877	2038	3853	5436	5256	2523	3945	78928

Provincia atendió parto	No.	%
SANTO DOMINGO	19833	25.13%
DISTRITO NACIONAL	15706	19.90%
SANTIAGO	7484	9.48%
SAN CRISTOBAL	6964	8.82%
BARAHONA	3150	3.99%
LA VEGA	2833	3.59%
PUERTO PLATA	2667	3.38%
AZUA	2321	2.94%
SAN JUAN	2211	2.80%
LA ROMANA	2064	2.62%
VALVERDE	1623	2.06%
LA ALTAGRACIA	1587	2.01%
MONTE PLATA	1414	1.79%
PERAVIA	1073	1.36%
SANCHEZ RAMIREZ	1043	1.32%
ESPAILLAT	1029	1.30%
SAMANA	758	0.96%
ELIAS PINA	682	0.86%
SAN PEDRO DE MACORIS	653	0.83%
DUARTE	596	0.76%
EL SEIBO	569	0.72%
HERMANAS MIRABAL	569	0.72%
BAORUCO	455	0.58%
SANTIAGO RODRIGUEZ	447	0.57%
HATO MAYOR	410	0.52%
SAN JOSE DE OCOA	273	0.35%
DAJABON	195	0.25%
MARIA TRINIDAD SANCHEZ	156	0.20%
INDEPENDENCIA	142	0.18%
PEDERNALES	21	0.03%
Total	78928	100.00%

Establecimiento	No.	%
MATERNIDAD NUESTRA SEÑORA DE LA ALTAGRACIA	11837	15.00%
MATERNIDAD DR. REYNALDO ALMANZAR	8444	10.70%
HOSPITAL PRESIDENTE ESTRELLA URENA SANTIAGO	5478	6.94%
JUAN PABLO PINA	5094	6.45%
SAN LORENZO DE LOS MINA (MATERNO-INFANTIL)	4749	6.02%
HOSPITAL JAIME MOTA	3041	3.85%
HOSPITAL DE LA MUJER DOMINICANA	3003	3.80%
DR MARCELINO VELEZ SANTANA	2808	3.56%
RICARDO LIMARDO	2391	3.03%
TAIWAN 19 DE MARZO	2249	2.85%
DR LUIS MORILLO KING	2200	2.79%
GENERAL DOCTOR VINICIO CALVENTI	1964	2.49%
DR FRANCISCO ANTONIO GONZALVO	1811	2.29%
DR. ALEJANDRO CABRAL	1677	2.12%
NUESTRA SENORA DE LA ALTAGRACIA	1585	2.01%
NUESTRA SENORA DE REGLA	1032	1.31%
TORIBIO BENCOSME	1029	1.30%
VILLA ALTAGRACIA	759	0.96%
LEOPOLDO POU	707	0.90%
HOSPITAL DR JOSE FRANCISCO PENA GOMEZ	663	0.84%
ENGOMBE	653	0.83%
HOSPITAL INMACULADA	646	0.82%
Total	78928	100.00%

Desagregación por provincia, grupo etareo y tipo de partos

Tipo de parto	Cesárea		Vaginal		Total	
Grupos Etarios de Madres	Nacidos Vivos	% Nacidos Vivos	Nacidos Vivos	% Nacidos Vivos	Nacidos Vivos	% Nacidos Vivos
(Blank)	6435	8.15%	5140	6.51%	11575	14.67%
< 14 años	313	0.40%	317	0.40%	630	0.80%
15 a 19 años	7441	9.43%	8705	11.03%	16146	20.46%
20 a 24 años	11537	14.62%	11106	14.07%	22643	28.69%
25 a 29 años	8277	10.49%	7794	9.87%	16071	20.36%
30 a 34 años	3938	4.99%	3752	4.75%	7690	9.74%
35 a 39 años	1725	2.19%	1640	2.08%	3365	4.26%
40 a 44 años	350	0.44%	356	0.45%	706	0.89%
45 o mas	41	0.05%	35	0.04%	76	0.10%
N/D	17	0.02%	9	0.01%	26	0.03%
Total	40074	50.77%	38854	49.23%	78928	100.00%

Tipo de parto	Cesárea		Vaginal		Total	
Month	Cantidad	%	Cantidad	%	Cantidad	%
January	3290	4.17%	3265	4.14%	6555	8.31%
February	3081	3.90%	2810	3.56%	5891	7.46%
March	3325	4.21%	2735	3.47%	6060	7.68%
April	2956	3.75%	2622	3.32%	5578	7.07%
May	3094	3.92%	3014	3.82%	6108	7.74%
June	2995	3.79%	2978	3.77%	5973	7.57%
July	3168	4.01%	3054	3.87%	6222	7.88%
August	3684	4.67%	3448	4.37%	7132	9.04%
September	3787	4.80%	3951	5.01%	7738	9.80%
October	4127	5.23%	4204	5.33%	8331	10.56%
November	3487	4.42%	3567	4.52%	7054	8.94%
December	3080	3.90%	3206	4.06%	6286	7.96%
Total	40074	50.77%	38854	49.23%	78928	100.00%

Tipo de parto	Cesárea		Vaginal		Total	
Provincia atendió parto	Cantidad	%	Cantidad	%	Cantidad	%
AZUA	717	0.91%	1604	2.03%	2321	2.94%
BAORUCO	206	0.26%	249	0.32%	455	0.58%
BARAHONA	1376	1.74%	1774	2.25%	3150	3.99%
DAJABON	65	0.08%	130	0.16%	195	0.25%
DISTRITO NACIONAL	8829	11.19%	6877	8.71%	15706	19.90%
DUARTE	385	0.49%	211	0.27%	596	0.76%
EL SEIBO	242	0.31%	327	0.41%	569	0.72%
ELIAS PINA	121	0.15%	561	0.71%	682	0.86%
ESPAILLAT	523	0.66%	506	0.64%	1029	1.30%
HATO MAYOR	184	0.23%	226	0.29%	410	0.52%
HERMANAS MIRABAL	428	0.54%	141	0.18%	569	0.72%
INDEPENDENCIA	54	0.07%	88	0.11%	142	0.18%
LA ALTAGRACIA	951	1.20%	636	0.81%	1587	2.01%
LA ROMANA	926	1.17%	1138	1.44%	2064	2.62%
LA VEGA	1593	2.02%	1240	1.57%	2833	3.59%
MARIA TRINIDAD SANCHEZ	107	0.14%	49	0.06%	156	0.20%
MONTE PLATA	739	0.94%	675	0.86%	1414	1.79%
PEDERNALES	13	0.02%	8	0.01%	21	0.03%
PERAVIA	520	0.66%	553	0.70%	1073	1.36%
PUERTO PLATA	1224	1.55%	1443	1.83%	2667	3.38%
SAMANA	392	0.50%	366	0.46%	758	0.96%
SAN CRISTOBAL	2618	3.32%	4346	5.51%	6964	8.82%
SAN JOSE DE OCOA	150	0.19%	123	0.16%	273	0.35%
SAN JUAN	896	1.14%	1315	1.67%	2211	2.80%
SAN PEDRO DE MACORIS	290	0.37%	363	0.46%	653	0.83%
SANCHEZ RAMIREZ	769	0.97%	274	0.35%	1043	1.32%
SANTIAGO	3441	4.36%	4043	5.12%	7484	9.48%
SANTIAGO RODRIGUEZ	319	0.40%	128	0.16%	447	0.57%
SANTO DOMINGO	11257	14.26%	8576	10.87%	19833	25.13%
VALVERDE	739	0.94%	884	1.12%	1623	2.06%
Total	40074	50.77%	38854	49.23%	78928	100.00%

Region atendio parto	Grupos Etarios de Madres	(Blank)		<14 años		15 a 19 años		20 a 24 años		25 a 29 años		30 a 34 años		35 a 39 años		40 a 44 años		45 o mas		N/D		Total	
		Provincia madre	No.	%	No.	%	No.	%	No.	%	No.	%	No.	%	No.	%	No.	%	No.	%	No.		%
All	AZUA	43	0.05%	17	0.02%	498	0.63%	743	0.94%	612	0.78%	280	0.35%	102	0.13%	22	0.03%	1	0.00%				2.00%
	BAORUCO	36	0.05%	7	0.01%	170	0.22%	297	0.38%	180	0.23%	105	0.13%	43	0.05%	8	0.01%	5	0.01%				0.01%
	BARAHONA	56	0.07%	26	0.03%	611	0.77%	809	1.02%	527	0.67%	257	0.33%	110	0.14%	28	0.04%	9	0.01%				2.00%
	DAJABON	13	0.02%	4	0.01%	63	0.08%	107	0.14%	63	0.08%	40	0.05%	13	0.02%	2	0.00%						0.00%
Year	DISTRITO NACIONAL	561	0.71%	62	0.08%	1222	1.55%	1836	2.33%	1419	1.80%	811	1.03%	372	0.47%	74	0.09%	4	0.01%	2	0.00%		6.00%
2017	DUARTE	4	0.01%	8	0.01%	153	0.19%	173	0.22%	124	0.16%	40	0.05%	25	0.03%	5	0.01%						0.00%
	EL SEIBO	27	0.03%	2	0.00%	144	0.18%	199	0.25%	134	0.17%	64	0.08%	31	0.04%	2	0.00%						0.00%
	ELIAS PINA	28	0.04%	3	0.00%	161	0.20%	256	0.32%	165	0.21%	75	0.10%	54	0.07%	16	0.02%	3	0.00%				0.00%
	ESPAILLAT	47	0.06%	7	0.01%	318	0.40%	442	0.56%	252	0.32%	117	0.15%	53	0.07%	6	0.01%	1	0.00%				1.00%
Month	HATO MAYOR	270	0.34%	2	0.00%	32	0.04%	64	0.08%	41	0.05%	16	0.02%	3	0.00%	2	0.00%						0.00%
	HERMANAS MIRABAL	6	0.01%	2	0.00%	160	0.20%	177	0.22%	105	0.13%	58	0.07%	27	0.03%	2	0.00%						0.00%
All	INDEPENDENCIA	26	0.03%	5	0.01%	78	0.10%	145	0.18%	85	0.11%	58	0.07%	15	0.02%	2	0.00%						0.00%
	LA ALTAGRACIA	229	0.29%	8	0.01%	162	0.21%	270	0.34%	797	1.01%	114	0.14%	53	0.07%	12	0.02%	5	0.01%	2	0.00%		1.00%
	LA ROMANA	37	0.05%	12	0.02%	496	0.63%	724	0.92%	447	0.57%	212	0.27%	114	0.14%	22	0.03%	1	0.00%	12	0.02%		2.00%
	LA VEGA	507	0.64%	20	0.03%	405	0.51%	730	0.92%	945	1.20%	147	0.19%	57	0.07%	15	0.02%	2	0.00%	3	0.00%		2.00%
	MARIA TRINIDAD SANCHEZ	5	0.01%	2	0.00%	39	0.05%	63	0.08%	36	0.05%	15	0.02%	5	0.01%	2	0.00%						0.00%
	MONSEÑOR NOUEL	4	0.01%	1	0.00%	14	0.02%	19	0.02%	7	0.01%	3	0.00%	4	0.01%	2	0.00%						0.00%
	MONTE CRISTI	35	0.04%	4	0.01%	101	0.13%	133	0.17%	86	0.11%	39	0.05%	15	0.02%	6	0.01%						0.00%
	MONTE PLATA	332	0.42%	11	0.01%	371	0.47%	557	0.71%	385	0.49%	180	0.23%	76	0.10%	24	0.03%	2	0.00%				1.00%
	PEDERNALES	6	0.01%	1	0.00%	30	0.04%	59	0.07%	28	0.04%	20	0.03%	10	0.01%	1	0.00%						0.00%
	PERAVIA	29	0.04%	10	0.01%	288	0.36%	416	0.53%	225	0.29%	117	0.15%	39	0.05%	11	0.01%	2	0.00%				1.00%
	PUERTO PLATA	40	0.05%	28	0.04%	700	0.89%	959	1.22%	605	0.77%	326	0.41%	134	0.17%	39	0.05%	1	0.00%				2.00%
	SAMANA	97	0.12%	1	0.00%	137	0.17%	267	0.34%	173	0.22%	80	0.10%	35	0.04%	7	0.01%	4	0.01%	1	0.00%		0.00%
	SAN CRISTOBAL	346	0.44%	86	0.11%	2104	2.67%	2712	3.44%	1593	2.02%	851	1.08%	330	0.42%	72	0.09%	7	0.01%	1	0.00%		8.00%
	SAN JOSE DE OCOA	55	0.07%	2	0.00%	76	0.10%	90	0.11%	44	0.06%	28	0.04%	10	0.01%	5	0.01%						0.00%
	SAN JUAN	167	0.21%	38	0.05%	536	0.68%	678	0.86%	454	0.58%	194	0.25%	94	0.12%	13	0.02%	3	0.00%				2.00%
	SAN PEDRO DE MACORIS	59	0.07%	9	0.01%	159	0.20%	225	0.29%	125	0.16%	67	0.08%	27	0.03%	3	0.00%						0.00%
	SANCHEZ RAMIREZ	43	0.05%	7	0.01%	274	0.35%	402	0.51%	231	0.29%	72	0.09%	24	0.03%	6	0.01%	1	0.00%				1.00%
	SANTIAGO	317	0.40%	62	0.08%	1728	2.19%	2184	2.77%	1406	1.78%	681	0.86%	341	0.43%	74	0.09%	9	0.01%				6.00%
	SANTIAGO RODRIGUEZ	19	0.02%	4	0.01%	105	0.13%	137	0.17%	100	0.13%	39	0.05%	13	0.02%	5	0.01%						0.00%
	SANTO DOMINGO	7995	10.13%	169	0.21%	4472	5.67%	6333	8.02%	4397	5.57%	2462	3.12%	1089	1.38%	213	0.27%	15	0.02%	5	0.01%		27.00%
	VALVERDE	136	0.17%	10	0.01%	339	0.43%	437	0.55%	280	0.35%	122	0.15%	47	0.06%	5	0.01%	1	0.00%				1.00%
	Total	11575	14.67%	630	0.80%	16146	20.46%	22643	28.69%	16071	20.36%	7690	9.74%	3365	4.26%	706	0.89%	76	0.10%	26	0.03%		78.00%